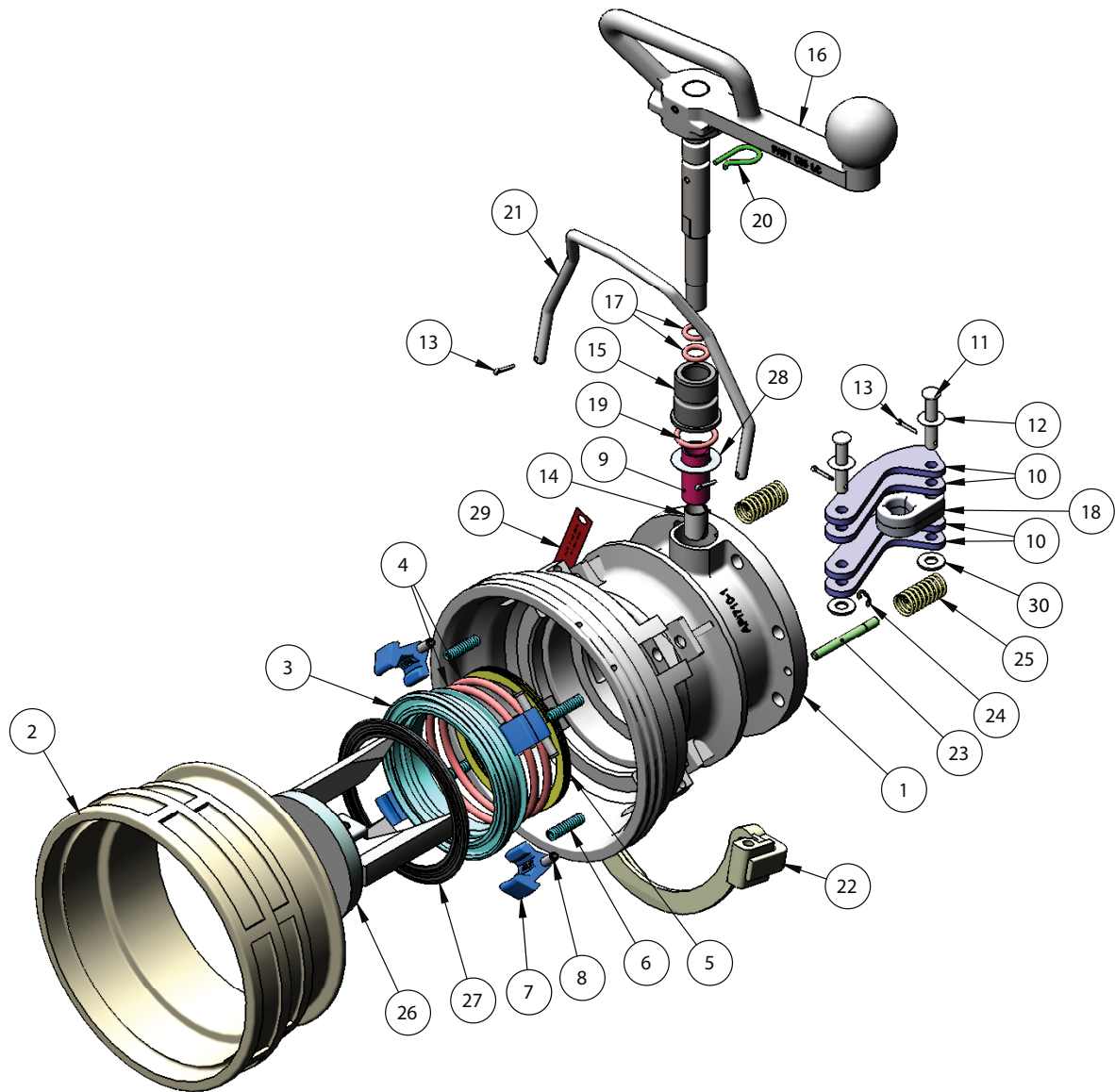


**API712 DRY BREAK GANTRY COUPLER**



| ITEM NO. | PART NUMBER | DESCRIPTION                        | API712 | API712VG | MATERIAL     |
|----------|-------------|------------------------------------|--------|----------|--------------|
| 1        | API710-1    | BODY API710 COUPLER                | 1      | 1        | ALUMINIUM    |
| 2        | API700-3    | OUTER BODY (COLLAR)                | 1      | 1        | ST STEEL     |
| 3        | API710-11   | POPPET ADAPTOR RING                | 1      | 1        | ALUMINIUM    |
| 4        | 0203        | O-RING                             | 2      | -        | VITON B70    |
| 4        | 0203VG      | O-RING                             | -      | 2        | VITON GFLT   |
| 5        | 4449        | SPRING SPIRAWAVE                   | 1      | 1        | SPRING STEEL |
| 6        | 6171        | SPRING COMPRESSION                 | 4      | 4        | ST STEEL     |
| 7        | API725-4    | LATCH COLLAR INTERLOCK             | 4      | 4        | ST STEEL     |
| 8        | 0927        | SPRING PIN                         | 4      | 4        | Z/P STEEL    |
| 9        | API555-9    | SPACER TUBE TO SUIT 4"             | 1      | 1        | ST STEEL     |
| 10       | API700-15   | CAMPLATE                           | 4      | 4        | BISPLATE 80  |
| 11       | 6736        | CLEVIS PIN                         | 2      | 2        | STEEL        |
| 12       | 5351        | WASHER FLAT THIN                   | 2      | 2        | ST STEEL     |
| 13       | 0762        | SPLIT PIN                          | 4      | 4        | ST STEEL     |
| 14       | 2698        | TETRATAPE BEARING TO SUIT          | 1      | 1        | TEFLON       |
| 15       | API513-6    | BUSH BEARING                       | 1      | 1        | ACETAL       |
| 16       | API700-2    | HANDLE/SHAFT SUB-ASSY - LONG STYLE | 1      | 1        | ALUMINIUM    |
| 17       | 0235        | O-RING                             | 2      | -        | VITON B70    |
| 17       | 0235VG      | O-RING                             | -      | 2        | VITON GFLT   |
| 18       | API513-7    | CAM ECCENTRIC                      | 1      | 1        | ST STEEL     |
| 19       | 4574VG      | O-RING                             | 1      | 1        | VITON GFLT   |
| 20       | 0945        | R-CLIP TO SUIT API450 SERIES       | 1      | 1        | ST STEEL     |
| 21       | API555-6    | HANDLE - OUTER BODY RING           | 1      | 1        | ST STEEL     |
| 22       | API555-10   | LEVER OUTER BODY                   | 1      | 1        | ALUMINIUM    |
| 23       | API555-7    | PIN - SPRING RETURN                | 2      | 2        | ST STEEL     |
| 24       | 0093        | E-CLIP IMPERIAL                    | 2      | 2        | ST STEEL     |
| 25       | 4497        | SPRING - RETURN                    | 2      | 2        | SPRING STEEL |
| 26       | API555-5H   | POPPET TO SUIT 4"                  | 1      | 1        | ALUMINIUM    |
| 27       | 4602VB      | SEAL PRODUCT                       | 1      | -        | VITON B70    |
| 27       | 4602VG      | SEAL PRODUCT                       | -      | 1        | VITON GFLT   |
| 28       | 5352        | SHIM WASHER                        | 1      | 1        | ST STEEL     |
| 29       | 6306        | LABEL FOR HANDLE RELEASE           | 1      | 1        | ALUMINIUM    |
| 30       | 0101        | WASHER FLAT                        | 2      | 2        | STEEL        |
| 31       | 7476        | INSTRUCTIONS                       | 1      | 1        | PAPER        |
| 32       | 7486        | DATASHEET                          | 1      | 1        | PAPER        |